

Project Newsletter #4 – April 2017

Downtown St. Thomas HCD – Study Completion



The City of St. Thomas proposed Downtown St. Thomas Heritage Conservation District (HCD) Area Study document is ready for public review. The HCD study identified and evaluated heritage buildings and landscapes within the downtown area to determine its overall heritage character. The study has determined that the area outlined in blue (see reverse) warrants consideration for designation under Part V of the *Ontario Heritage Act (OHA)*. The area recommended for consideration for designation under Part V of the OHA consists of the properties fronting on Talbot Street between Queen Street through to the west side of Alma Street. The recommended HCD boundary also includes remnants of the City's railway heritage. The identified area is recommended as a single HCD.

What happens next?

The Area Study is the first stage of a two phase process. Since the findings have determined that the area has heritage merit, Council can decide to proceed with Phase 2: preparing a plan and guidelines to manage change in the area. It is important to note that at this time, the City and Stantec have only completed Phase 1. No policies or guidelines are created during this Phase.

The draft document will be available for public review on **Tuesday, April 4th, 2017**. You may access a copy of the draft Area Study by visiting the project website at:

<http://www.stthomas.ca/content/downtown-st-thomas-heritage-area-study>

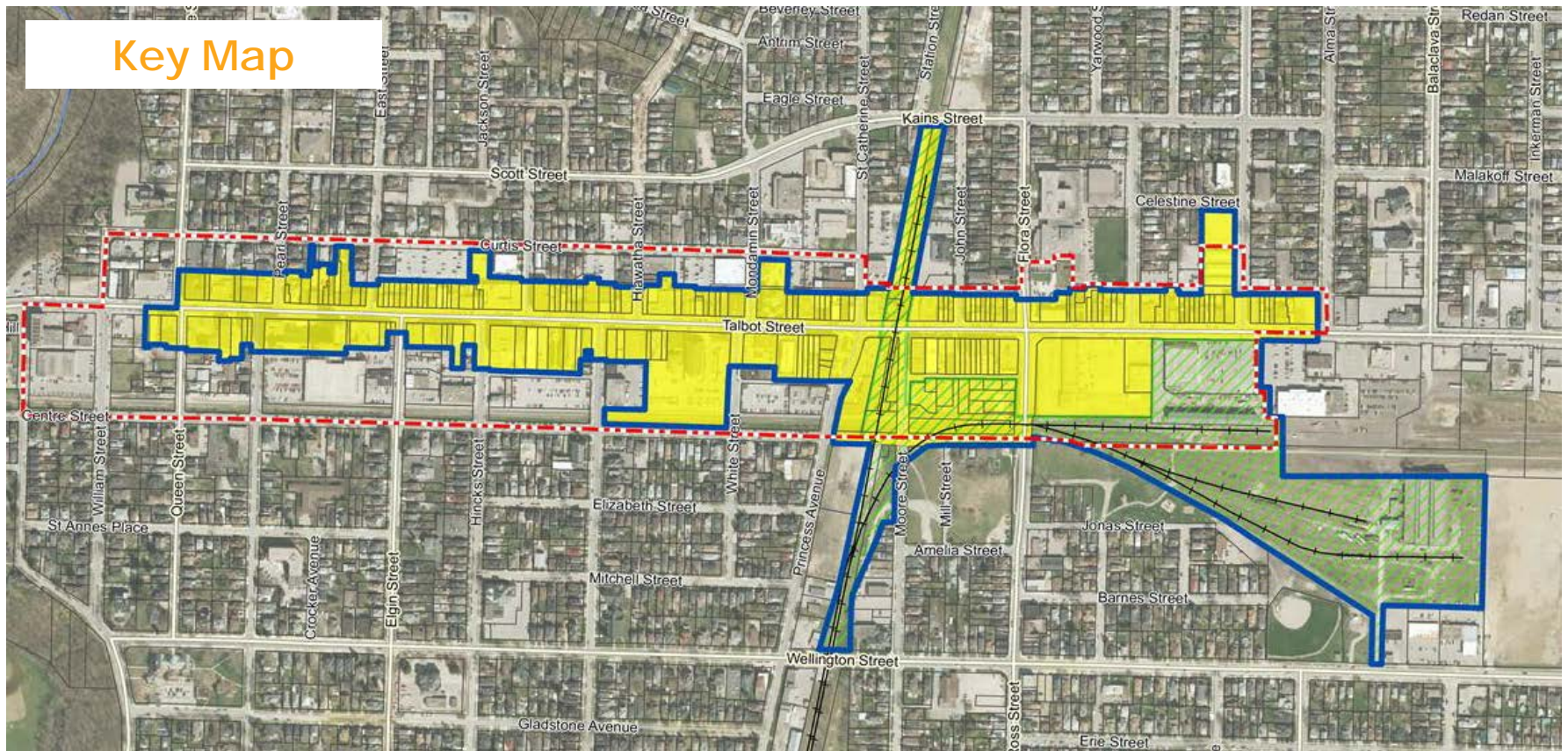
Paper copies of the document will also be available to review at City Hall through the Customer Service desk or at the Planning and Building Services Department. **Comments should be submitted no later than Friday, April 28th to the contacts noted on the back.**

The consultants will be presenting the document to Council at their meeting on **Tuesday, April 18th, 2017 at 6:00 p.m.**

Heritage Attributes

- The high concentration of late 19th and early 20th century commercial buildings forming a commercial street wall along Talbot Street.
- Cohesiveness of building setbacks, materials (brick), heights and massing along Talbot Street.
- The predominance of Italianate, Edwardian, and vernacular architectural influences.
- Architectural details of the various styles and influences.
- Predominant use of brick as an exterior cladding material.
- Traditional façade organization of commercial or mixed use buildings.
- The urban form of the smaller block lengths.
- Remnant railway buildings and infrastructure.
- Views along the remnant railway corridors.
- Views into the district along the side streets terminating at the Talbot commercial street wall.
- Views along Talbot Street defined by the low profile historic street wall.

Key Map



Legend

- Study Area
- Parcel Fabric
- Major Road
- Minor Road
- Railway - Operational
- Watercourse

Heritage Conservation District

- Proposed HCD Boundary
- Core Talbot Commercial Area
- Roll Lands Character Area

Have a Question?

For more information about the HCD project, please contact:

Jim McCoomb
Planner, City of St. Thomas
Tel: 519-631-1680
jmccoomb@stthomas.ca

Lashia Jones
Cultural Heritage Specialist
Stantec Consulting
Tel: 519- 675-6635
lashia.jones@stantec.com

